

ADVANCING POWER GENERATION



BOND

DANGER
HIGH VOLTAGE AREA
STAY AWAY FROM THIS
AREA AT ALL TIMES
FOR YOUR PROTECTION

BOND is the Northeast's premier full-service construction management and general contracting company offering coordinated building and self-performing civil & utility services.

As a key area of expertise, we are focused on
COMMERCIAL POWER GENERATION.

Early partnerships with our clients help support the development of each project through the use of feasibility studies and rigorous preconstruction planning. BOND develops successful project outcomes that are safe, reliable and cost effective.

BOND has been working in the power & energy industry for many decades. Navigating today's complex energy landscape takes expert leadership, investment in fast-developing technology and focused engagement.

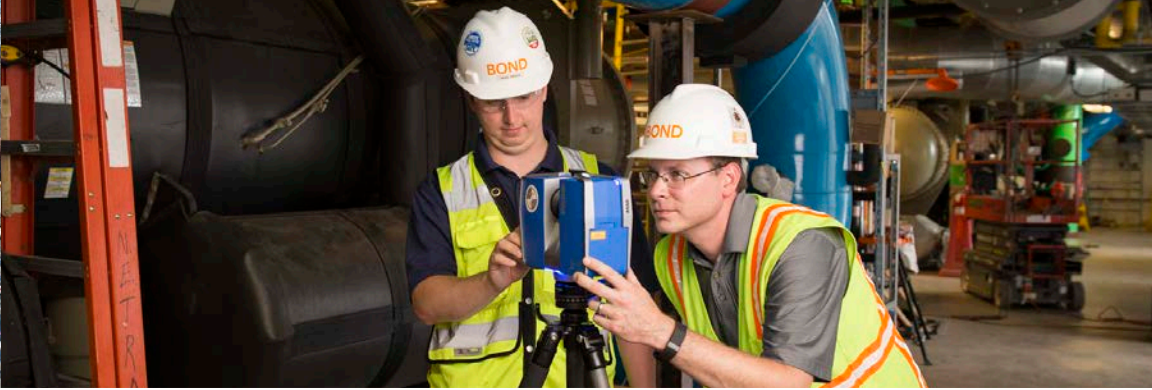
Our mission is to help our clients navigate through this complex environment and find solutions that achieve their goals now and well into the future.



MEET DENNIS KEOUGH

VP, POWER & ENERGY

Dennis is responsible for delivering integrated solutions within BOND's Power Generation market sector, servicing clients throughout the Northeast and Mid-Atlantic. With over twenty-five years' experience, Dennis is an expert at building complex projects within the power, environmental, industrial and construction industries. He has led the successful delivery of many multi-million dollar projects, from plant services to the engineering, procurement and construction (EPC) of new facilities. His expertise includes project engineering management, project scope & budget development and project delivery.



OUR POWER GENERATION TEAM

MANY STRENGTHS. ONE BOND.



SCOTT CHURCHILL
Vice President,
Estimating &
Business Development



GERRY MCMORROW
General Superintendent



STEPHEN SPINOSA
Project Executive



KYLE LEDOUX
Project Manager



JUSTIN LAJEUNESSE
Business Development Manager



ANDREW WOODWARD
Project Manager

OUR MARKETS



CIVIL INFRASTRUCTURE



ELECTRIC T&D



DISTRICT ENERGY



POWER GENERATION



OIL & GAS



HEALTHCARE



EDUCATION



OUR POWER GENERATION SERVICES

Power Plant Construction

Maintenance and Upgrades

In-Plant and Non-Outage

Civil Construction

Solar and Wind Farms

Nuclear Utility Services

CAPABILITIES

Feasibility Assessments

Front End Engineering Design (FEED) Studies

Equipment Evaluation and Procurement

Budgeting and Scheduling Support

VDC Services:

Building Information Modeling (BIM) and Laser Scanning

Boston

Providence

New Haven

New York

Newark





CASESTUDIES



FOOTPRINT POWER

Salem Harbor Energy Station

\$106 MILLION

CONTRACT VALUE

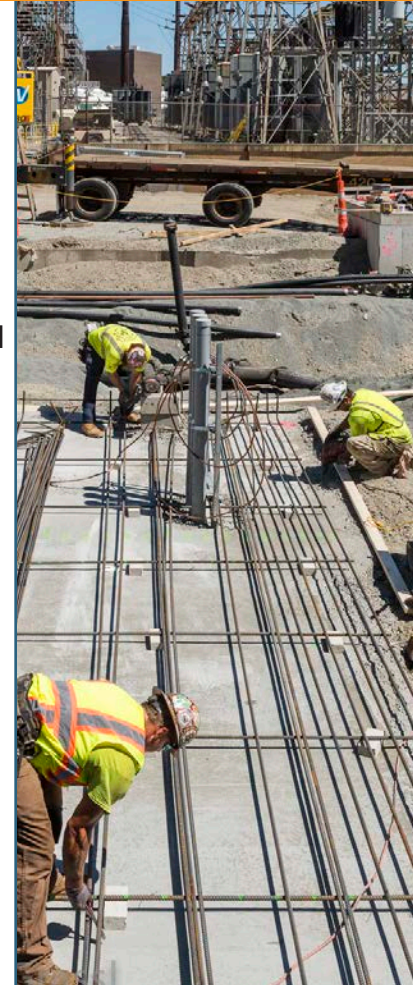
2018

YEAR COMPLETED

ENGINEERS
WORLEY PARSONS/IDOM

UNIT PRICE/LUMP SUM
CONSTRUCTION
BOND'S SERVICES

Iberdrola Energy Projects selected BOND as the civil site contractor for the new Salem Harbor Energy Center. The state-of-the-art 675 MW natural gas plant replaced a 60 year old coal & oil fired facility, requiring less than one third of the old plant's land, leaving the remainder for new waterfront development. To build the foundations, BOND installed 2,470 pre cast concrete piles and 30,600 CY of reinforced concrete. To support the operations and mechanical workings of the plant, BOND installed utility trenches for 50,000 LF of piping and ductbank and installed several water detention systems totaling 260,000 gallons.





HOOSAC WIND PROJECT

Iberdrola Renewables

\$20
MILLION
CONTRACT VALUE

2011
YEAR COMPLETED

ENGINEER
WESTWOOD
PROFESSIONAL SERVICES

**LUMP SUM
CONSTRUCTION**
BOND'S SERVICES

Iberdrola Renewables selected BOND as a partner during the construction of one of the largest wind energy facilities in Southern New England. Located in the Berkshires, this \$20 million project marks another milestone in Massachusetts' Renewable Energy Initiative, which plans for Wind Energy to account for 10% of the state's electricity load by 2020. Our team constructed 19 concrete foundations for 340' tall 1.5 MW GE-model turbines, excavated and installed 17,000 LF of underground and overhead DC/AC collection systems, installed a new 69 kV/34.5 kV substation and built an Operations & Maintenance Building that houses the facility's controls.





SPECTRA ENERGY
Baileyville Meter Station

**\$1.8
MILLION**
CONTRACT VALUE

2012
YEAR COMPLETED

ENGINEER
PROCESS PIPELINE
SERVICES, INC.

**DESIGN-BUILD
SELF-PERFORM**
BOND'S SERVICES

Spectra relied on BOND's collaborative planning and fast-track design/build execution to meet a tightly constrained in-service date. Within a 5-month period, the project was planned, designed, permitted, constructed and commissioned. The project was coordinated between two crews, one in New Haven, CT and the other in Baileyville, ME. BOND ordered critical long lead gas elements such as the ultrasonic meter tube and filter separator in advance of the 100% design, thereby saving critical schedule weeks.



BRAINTREE ELECTRIC LIGHT DEPARTMENT

Watson Generating Station

\$9.7
MILLION

CONTRACT VALUE

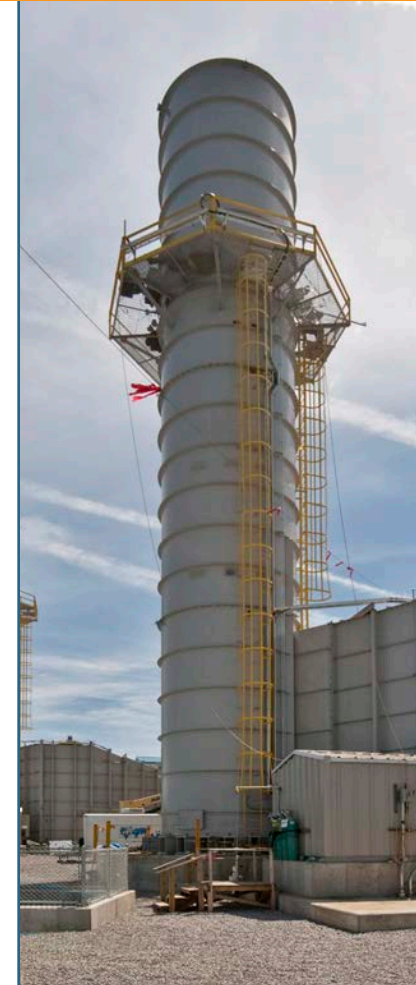
2009
YEAR COMPLETED

ENGINEER
PB POWER, INC.

LUMP SUM
CONSTRUCTION
BOND'S SERVICES

BOND played a significant role on the design/build team for this waterfront plant in Braintree, Massachusetts. The project included: mass excavation, sitework, underground utility, cast-in-place concrete, as well as managing the interior finishes of the control room.

The BOND team also installed a steel sheet pile earth support system along the waterway. This system required diligent attention to the site safety plan and environmental controls.





GEMMA POWER SYSTEMS West Medway II Facility Project

**\$23
MILLION**
CONTRACT VALUE

2018
YEAR COMPLETED

ENGINEER
MOTT MACDONALD

**LUMP SUM
CONSTRUCTION**
BOND'S SERVICES

BOND was responsible for a complete site civil package, foundations, underground mechanical, underground electrical, grounding, paving and site restoration. BOND provided the client a high quality and timely product of the 'anchor bolts down' package, to support the project's schedule and above ground scopes of work. The two unique challenges of this project were the compact site arrangement and aggressive project schedule. The project team analyzed the site arrangement plan and developed a detailed project schedule of all foundation, electrical and piping systems to manage the installation sequence of each component to meet the contractual milestone dates.





ENGIE NORTH AMERICA
Mount Tom Solar Farm

\$690
THOUSAND
CONTRACT VALUE

2016
YEAR COMPLETED

ENGINEER
AECOM

LUMP SUM
BOND'S SERVICES

BOND was selected to perform the installation of solar panel posts and site work for the owner, Engie North America. The project was a 5.8 MW (DC) – 4.5 MW (AC) solar farm with an estimated annual production of 7,286 MWh for the city of Holyoke.

The project entailed the installation of 1465 solar panel posts, the install of 46 H-piles for switchgear and transformer elevated platforms, excavation and backfill of 1,200 LF of electrical trench, the construction of four cast-in-place stair landings, as well as the installation of site perimeter fencing. BOND also performed the installation of solar panel posts for solar panels installed by others, and the pile foundations for switchgear and transformer platforms installed by others. In addition, BOND completed the excavation of electrical ductbanks.





NRG ENERGY

Kendall Station Repowering

\$9.7 MILLION

CONTRACT VALUE

256MW

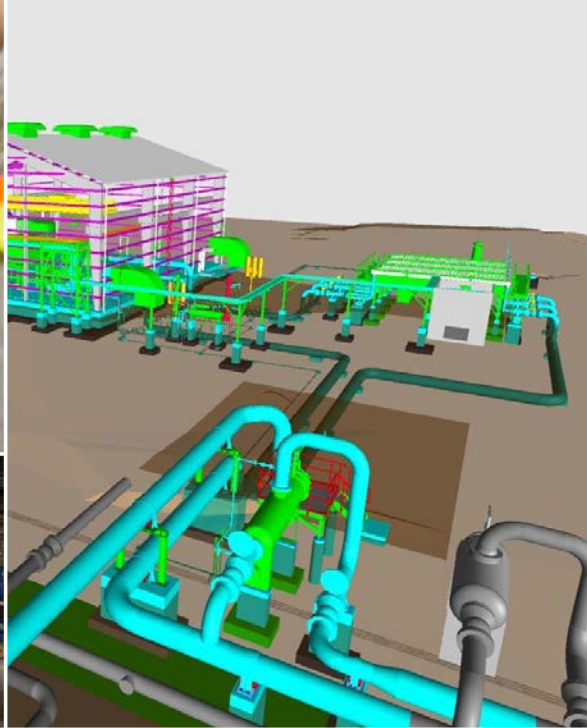
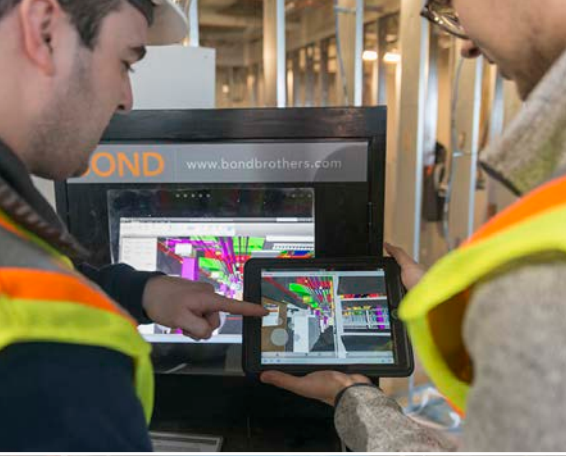
COMBINED CYCLE
POWER PLANT

ENGINEER
BIBB & ASSOCIATES

**LUMP SUM
SELF-PERFORM**
BOND'S SERVICES

Kendall Station is a 256 megawatt combined cycle power plant located in the densely populated, biotechnology area of Kendall Square in Cambridge, MA. Although its roots date back to the 1940s, the building has been upgraded as an efficient combined heat and power plant that's tapping district heating to improve efficiency by more than 90%. This project was completed within a fast-track, 16 month schedule. Since completion, the plant has quadrupled electricity output and reduced air emissions by 41%.





REALITY CAPTURE | VIRTUAL DESIGN & CONSTRUCTION

INTEGRATED SERVICES

START WITH THE END IN MIND.

BOND's Integrated Services model is a collaborative approach that combines the latest technology innovations with the brightest teams to manage a project's entire life-cycle.

Site Evaluation

Improved Planning

Enhanced Quality Control

Coordination and Constructability Reviews

Virtual Reviews

Model Code-Required Clearances

Maintenance of Access Zones around Equipment

Clash Detection within Existing Conditions Model

Effectively Track Punch List / Commissioning Items



BOND considers protecting every person within or near the construction site its foremost priority. No priority overrules safety at any time. We integrate safety into our construction planning and activities. This is represented by **OUR 2018 EMR RATING OF .71**

SAFETY FORWARD
BEST PRACTICES.



BOND'S KEYS TO SUCCESS

Affiliations with Most of the Region's Engineering Companies in the Power Marketplace

Extensive Experience with the Premier Electrical & Mechanical Contractors in the Region

Extensive Knowledge of the Northeast Energy Landscape

Innate Ability to Integrate Systems into Existing Facilities or New Construction

Comprehensive Preconstruction and Preplanning Efforts

Supply Turnkey Project Packages

ESTABLISHED 1907
WEB ADDRESS WWW.BONDBROTHERS.COM
MAIN ADDRESS 10 CABOT ROAD, SUITE 300 | MEDFORD, MA 02155 | 617.384.3400
CONNECTICUT OFFICE 370 JAMES STREET, SUITE 405 | NEW HAVEN, CT 06513 | 860.349.8880
NEW JERSEY OFFICE ONE GATEWAY CENTER, SUITE 2600 | NEWARK, NJ 07102 | 973.799.8572
NEW YORK OFFICE 34 MARCONI STREET | BRONX, NY 10461 | 617.387.3400
RHODE ISLAND OFFICE ONE CEDAR STREET, SUITE 100 | PROVIDENCE, RI 02903 | 401.383.7007

SERVICES PRECONSTRUCTION | FACILITIES ASSET MANAGEMENT
CONSTRUCTION MANAGEMENT | FAST TRACK PROJECT DELIVERY
BUILDING & UTILITY GENERAL CONTRACTING | DESIGN / BUILD

ORGANIZATION CORPORATION, COMMONWEALTH OF MASSACHUSETTS

OFFICERS EDWARD A. BOND, JR., CHIEF EXECUTIVE OFFICER
ROBERT C. MURRAY, PRESIDENT
FRANCIS X. HAYES, CHIEF OPERATING OFFICER
ANTHONY BOND, PRESIDENT, C&U DIVISION
RICHARD SMALL, CHIEF FINANCIAL OFFICER
PAUL JAMES, SR. VICE PRESIDENT, RISK MANAGEMENT

ADMINISTRATIVE STAFF 200
**SUPERINTENDENTS /
FIELD PERSONNEL** 550+
TOTAL EMPLOYEES 750+

BONDING LIMIT
SINGLE PROJECT \$500,000,000
TOTAL PROGRAM \$1,000,000,000

*AGGREGATE UNCOMPLETED
WORK PROGRAM

BONDING COMPANY LIBERTY BOND
SERVICES / AON RISK
SOLUTIONS NORTHEAST
617.457.7721

**GENERAL LIABILITY
INSURANCE COMPANY** GREENWICH
INSURANCE COMPANY /
AON RISK SOLUTIONS
NORTHEAST, BROKER

**WORKERS' COMP
INSURANCE COMPANY** XL INSURANCE
AMERICA INC /
AON RISK SOLUTIONS
NORTHEAST, BROKER

INSIGHT
CORPORATE FACTS



BOND

Dennis Keough, P.E. Vice President, Power & Energy
617.394.6328 *office* | 508.208.0224 *cell* | dkeough@bondbrothers.com

Justin LaJeunesse Business Development Manager
617.394.6374 *office* | 603.204.7361 *cell* | jlajeunesse@bondbrothers.com

BONDBROTHERS.COM