



PROJECTS GROUP



BOND

The Select Projects Group provides comprehensive preconstruction, construction management and general contracting services for renovations, façade restorations, building additions and time-sensitive construction for institutional clients.

OUR EXPERTISE INTEGRATING CONSTRUCTION PROGRAMS INTO AN ORGANIZATION'S OPERATIONS SPECIFICALLY BENEFITS CLIENTS WHO REQUIRE CONSTRUCTION SERVICES THAT MEET FIXED DEADLINES.

BOND is recognized for expertly controlling construction activities that minimize the effect on adjacent occupants. Our detailed mitigation plans comprise every aspect to minimize interference with operations.

RENEW

REPURPOSE

RENOVATE

RESTORE



VERN RICH

Vice President

Vern is a hands-on construction executive who has experience working within complicated and time-dependent interiors in occupied spaces. He has built a reputation for handling fast-track, complex projects, delivering them on schedule and exceeding client expectations.

Vern's extensive experience allows him to proactively address the typical challenges associated with special projects. As a result, he brings a wealth of experience to his clients and is consistently relied upon to work with notable clientele.

EDUCATION

Wentworth Institute of Technology
BS, Construction Management

CERTIFICATES & LICENSES

Commonwealth of Massachusetts
Construction Supervisor's License

AFFILIATIONS

National Association of Industrial
Office Properties (NAIOP)

OSHA 10-Hour Certification

YEARS' EXPERIENCE: 26



BRYAN GUBBINS
Director,
Business Development



KEVIN AYLWIN
Project Executive



JOSEPH CROWLEY
Senior Project Manager



PAM BAILEY, LEED AP
Project Manager



MARCUS DOW
Project Manager



ROB ZIRPOLO
Project Superintendent



REPRESENTATIVE PROJECTS



BOND
BOND's Medford, MA
Office Fit Out

BOND relocated its MA headquarters to Medford. The interior build-out occurred over three phases on two floors. The new offices are modern, with new furniture and furnishings, adjustable height desks and plenty of natural light. The open concept office has both enclosed and open team meeting spaces fostering team collaboration. The office is branded in BOND's signature orange with wall graphics underscoring the firm's values.

16k SQ. FT.
PHASE 1

18k SQ. FT.
PHASE 2

3k SQ. FT.
PHASE 3

2018
YEAR COMPLETED

ARCHITECT
JANOVSKY HURLEY
ARCHITECTS

- OPEN CONCEPT OFFICE
- ABUNDANT NATURAL LIGHT
- TEAM MEETING SPACES THAT FOSTER COLLABORATION
- SIGNATURE BOND ORANGE BRANDS THE OFFICE



MASSACHUSETTS INSTITUTE OF TECHNOLOGY

Building 2
Simons Building

As MIT approached its centennial anniversary, the Institute undertook a substantial renewal program among its historic buildings. One of the first major steps was the renovation of Building 2. The two distinct projects were: the 25,000 SF renovation of the North Wing (Chemistry) and the 97,000 SF renovation of the East and South Wings (Mathematics). The project also included a 13,500 SF rooftop addition. Key critical components to the success of Building 2 included: custom built windows for each façade opening, steel window frames built on site and the exterior limestone façade was repaired/restored and repointed.

136k

SQUARE FEET

AWARD

WON 2016 CAMBRIDGE
HISTORICAL COMMISSION
PRESERVATION AWARD

2014

YEAR COMPLETED

ARCHITECTS

WILLIAM WELLES BOSWORTH (ORIGINAL)
IMAI KELLER MOORE ARCHITECTS (CHEMISTRY)
ANA BEHA ARCHITECTS (MATH)
WESSLING ARCHITECTS (FACADE)

“

INSTALLING 40 CHEMICAL
FUME HOODS IN 8,000SF
WITH LOW FLOOR-TO-FLOOR
HEIGHTS IN AN OCCUPIED
BUILDING JUST BEGINS TO
CONVEY THE CHALLENGE.

JIM KELLER
President, Imai Keller Moore Architects



BOND considers protecting every person within or near the construction site its foremost priority. No priority overrules safety at any time. We integrate safety into our construction planning and activities. This is represented by **OUR 2018 EMR RATING OF .71**

SAFETY FORWARD
BEST PRACTICES.



TUFTS UNIVERSITY
Olin Center

BOND is providing construction management services for the renovation of an academic building. Planned exterior renovations include a slate roof replacement, new EPDM (ethylene propylene diene monomer) synthetic rubber roofing materials, re-pointing and a window tune-up. Building infrastructure upgrades include two new Air Handling Units (AHUs), new controls and metering and new piping and plumbing to connect to the campus' chilled water lines.

ETHYLENE PROPYLENE
DIENE MONOMER

EPDM

SYNTHETIC RUBBER
ROOFING MATERIALS

2019
SUMMER SLAMMER

ARCHITECT
BERGMEYER ASSOCIATES

SLATE ROOF REPLACEMENT

RE-POINTING

2 NEW AIR HANDLING UNITS



BENTLEY UNIVERSITY
Student Center

With new and improved space dedicated to meeting, studying, and socializing, the renovated Student Center reflects the University's commitment to embedding teamwork and collaboration into the fabric of their campus. Dubbed the "Bentley Bubble," the facility includes collaboration space, study rooms, team project rooms, new concessions, student activity offices and a pub.

The Center was successfully built on a challenging sloped site. All work was executed around continued occupancy of the facility, and was completed on time and within budget.

18k SQ. FT.
EXPANSION

20k SQ. FT.
RENOVATION

2015
YEAR COMPLETED

ARCHITECT
PERKINS + WILL

EXPANSION AND RENOVATION

OCCUPIED BUILDING
MITIGATION

DUBBED "BENTLEY BUBBLE"

MAJOR MILESTONE DATES HIT

INTEGRATED SERVICES

REALITY CAPTURE | VIRTUAL DESIGN & CONSTRUCTION | MEP SERVICES

START

WITH THE END
IN MIND

PROJECT PURSUIT

PRE-
CONSTRUCTION

COORDINATION

INSTALL / QA/QC

PROJECT TURNOVER

CONSTRUCTION
VISUALIZATION

LOGISTICS

4D SIMULATIONS

CRITICAL PICK PLANNING /
SIMULATIONS

EXISTING
CONDITIONS

LASER
SCANNING

EXPLORATORY
WORK

BUILDING
INFORMATION
MODELING

DESIGN
REVIEW

SUPPLEMENTAL
MODELS

TECHNICAL
SUBMITTAL
REVIEW

SPATIAL
COORDINATION

BIM BOX /
BIM 360 FIELD

TOUCH QA/QC

HOLOLENS-AR
TECHNOLOGY

QA/QC LASER SCANNING

EQUIPMENT TRACKING /
QR CODES

PRE-FUNCTIONAL TESTING

COMMISSIONING

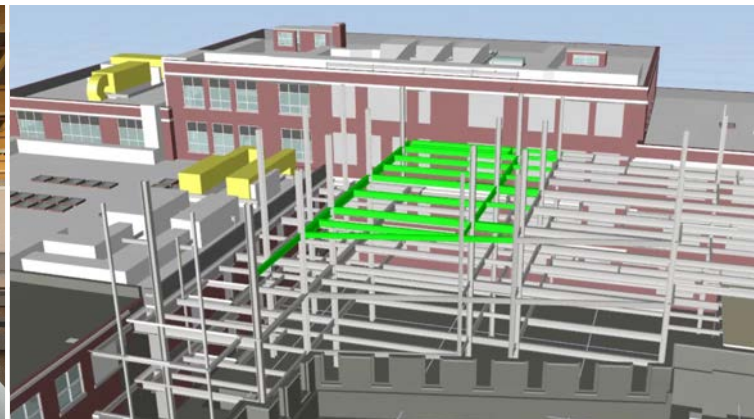
EQUIPMENT
START-UP

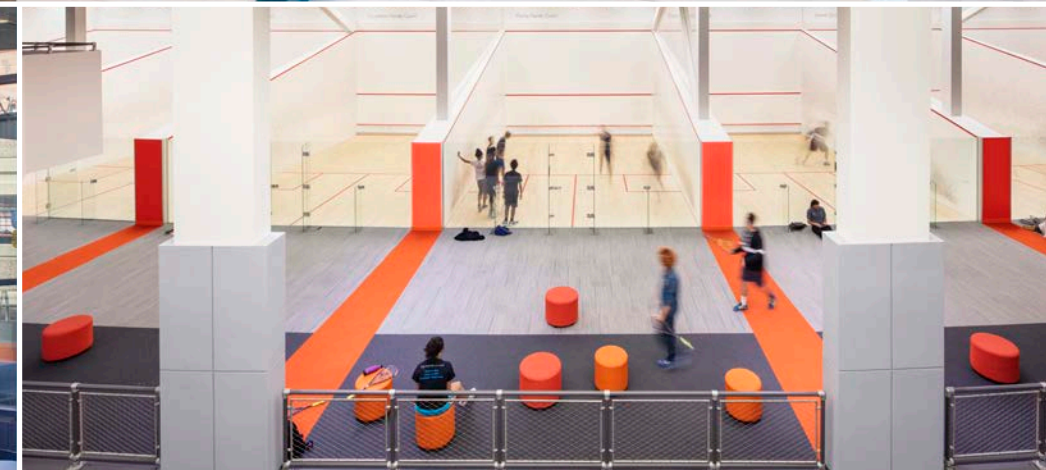
OWNER TRAINING

TURNOVER

INTEGRATION TO OWNER'S
CMMS / CAFM SYSTEM

PREVENTATIVE MAINTENANCE
SCHEDULES





NORTHEASTERN UNIVERSITY
SquashBusters Center

BOND provided preconstruction and construction management services for the 3,100 SF expansion, renovation and repurposing of a three-story building and its site. SquashBusters is a sports-based youth enrichment program that uses the sport of squash and academic support to nurture urban youth. Housed in a low-rise building that also contains Northeastern’s fitness center and multipurpose room, the building is on a tight urban site. Key challenges for the project were planning for utility relocations and keeping the building operable during construction.

OCCUPIED ADDITION & RENOVATION IN A

24/7 BUILDING

2018
YEAR COMPLETED

ARCHITECT
MERGE ARCHITECTS

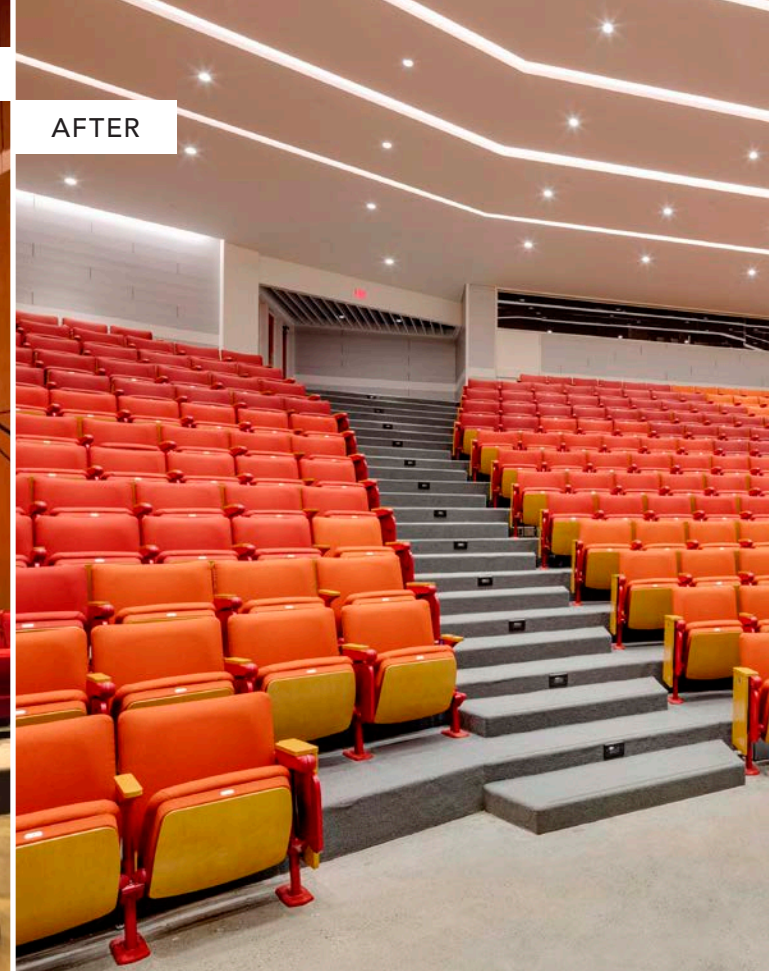
8 STATE-OF-THE-ART SQUASH COURTS

SEPARATE MEN AND WOMEN LOCKER ROOMS WITH A DRY SAUNA IN EACH

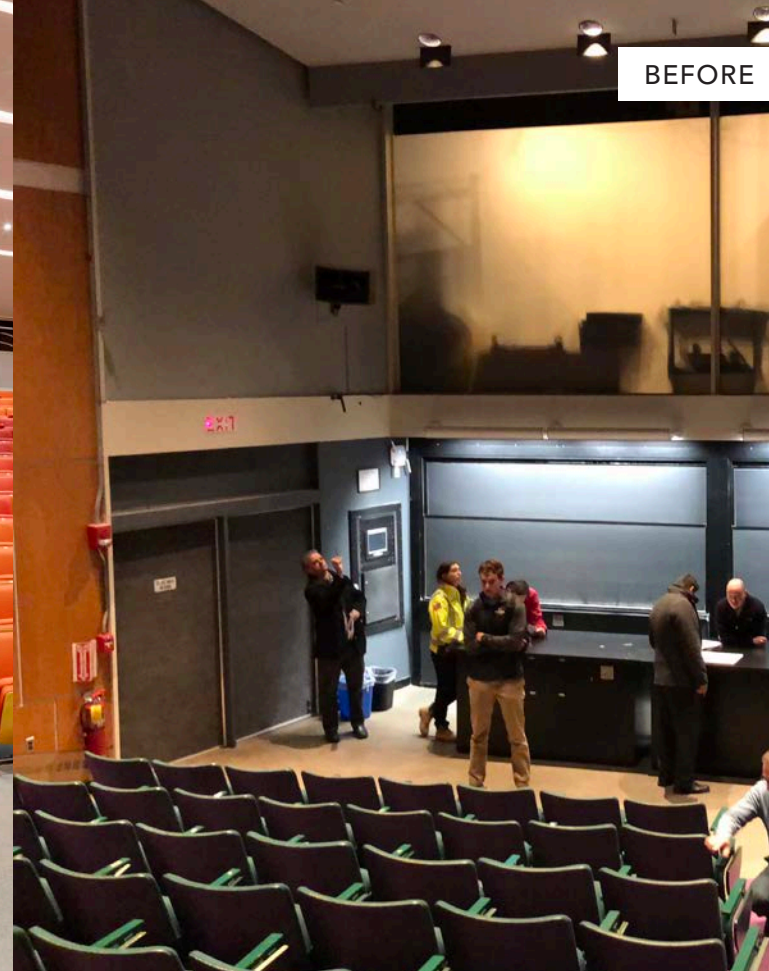
52 WORKOUT STATIONS



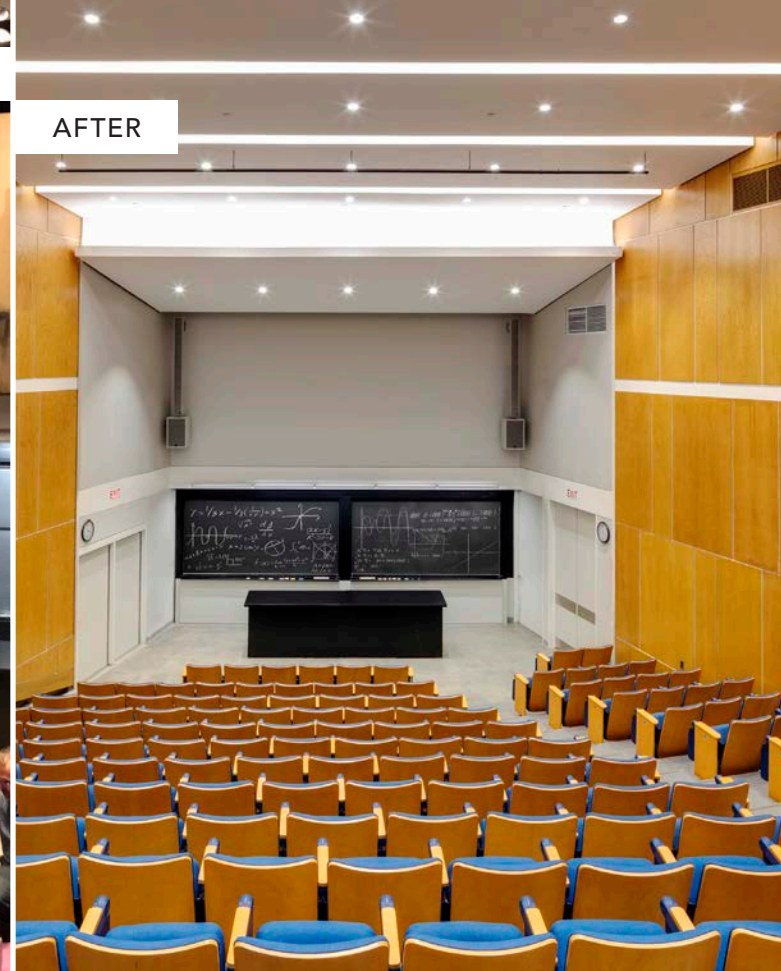
BEFORE



AFTER



BEFORE



AFTER

HARVARD UNIVERSITY
Faculty of Arts and Sciences
Science Center Lecture Halls
Renovation

BOND provided preconstruction and construction management services for the renovation of two lecture halls and extensive mechanical upgrades in an occupied facility. The scope of work included a new 16,500 CFM AHU, mechanical distribution, fire alarm and sprinklers, 600 new fixed seats, lighting, architecturally significant ceiling, restoration of historic maple wood wall paneling and carpet. The fast-track project was completed in the summer of 2018.

**SUMMER
SLAMMER**
IN AN OCCUPIED BLDG

2018
YEAR COMPLETED

ARCHITECT
AUDREY O'HAGAN
ARCHITECTS

COMPLETE
MECHANICAL UPGRADE

NEW SEATING

LIGHTING



BOND uses LEAN construction strategies on all projects as a means to minimize costs and maximize value. This process challenges each project stakeholder to develop, and apply, better ways to manage the construction process.

LEAN APPROACH
ELIMINATE WASTE. ADD VALUE.



HARVARD UNIVERSITY
Faculty of Arts and Sciences
Lamont Library

BOND provided preconstruction and construction management services for the complete demolition and rebuild of the 4,000 SF space on the fourth floor of the Lamont Library that now houses the Harvard Creative Writing Center. The scope of work included new mechanical, electrical, plumbing, millwork office fronts, floor finishes and repairs to the existing exterior windows. As part of the Center a kitchenette, restroom, administrative offices and conference room were added.

4,000
SQUARE FOOT
RENOVATION

2019
YEAR COMPLETED

ARCHITECT
SHEPLEY BULFINCH

RENOVATIONS FOR
CREATIVE WRITING PROGRAM

NEW OFFICES

FLEXIBLE MEETING SPACES



BEFORE



AFTER

HARVARD RADCLIFFE INSTITUTE

40 Concord Ave.

BOND provided preconstruction services to an existing 1898 wood-framed office building.

Interior scope included: the replacement of mechanical, electrical, and plumbing systems, a new fire protection service, a reconfiguration of the interior layout, structural reinforcement and the introduction of an elevator. Exterior scope included: window replacements, the rebuilding of two chimneys and a new slate roof.

The original building entrance off of Concord Avenue (removed in a prior renovation) was re-introduced and made accessible. An addition at the south facade provided accessible toilets and an accessible entry from the parking lot.

7,200
SQUARE FOOT
RENOVATION

1,500
SQUARE FOOT
ADDITION



Agassiz House Restoration

BOND was engaged to provide preconstruction and construction services for the Agassiz House which is located on Harvard's busy and highly-visible Radcliffe Yard. The team completed: extensive masonry re-pointing, the rebuilding of four chimneys, the upgrade to an existing elevator and the replacement of membrane roof, slate shingles and storm windows. Original plaster column capitals were removed and used to create molds for exact replicas to be cast and installed.



Knafel Center

BOND completed preconstruction and construction services related to façade renovations at Harvard Radcliffe's historic Gymnasium, renamed the Knafel Center at a ceremony in 2013. Originally constructed in 1898 and designed by celebrated architect McKim Mead & White, the building now serves as a lecture and event hall for the Radcliffe Institute, housing a large second floor space that is popular for both informal study gatherings and formal event space.



83 Brattle Street Apartments

BOND carefully planned masonry re-pointing for 100% of 83 Brattle's surface. Mortar was ground out and replaced to restore its visual and physical integrity. Deteriorated sandstone bands were cut and replaced with precast concrete replicas and hand-colored to blend in with the original pieces. BOND replaced 290 storm windows, repaired a number of original lead glass windows and completed abatement of asbestos-contaminated caulking buried within the building's façade.



Johnson-Kulukundis Family Gallery

Having received a philanthropic gift that funded the project, the gallery at Byerly Hall was transformed into an arts laboratory with flexible exhibition space. The expanded gallery offers reconfigurable space which provides the opportunity to display a variety of art, helping to enhance the creative arts at Harvard University. BOND worked this project concurrently with the 83 Brattle Street Apartments project.



Preconstruction Proficiency

Fast-Track Scheduling

Rapid, Cost-Effective Purchasing

Long-Term Relationships with Vendors and Subs

Effective Mitigation in Occupied Spaces

KEYS TO SUCCESS
VISION. EXCELLENCE.

ESTABLISHED | 1907
 WEB ADDRESS | WWW.BONDBROTHERS.COM
 MAIN ADDRESS | 10 CABOT ROAD, SUITE 300 | MEDFORD, MA 02155 | 617.384.3400
 CONNECTICUT OFFICE | 370 JAMES STREET, SUITE 405 | NEW HAVEN, CT 06513 | 860.349.8880
 NEW JERSEY OFFICE | ONE GATEWAY CENTER, SUITE 2600 | NEWARK, NJ 07102 | 973.799.8572
 NEW YORK OFFICE | 34 MARCONI STREET | BRONX, NY 10461 | 617.387.3400
 RHODE ISLAND OFFICE | ONE CEDAR STREET, SUITE 100 | PROVIDENCE, RI 02903 | 401.383.7007

SERVICES | PRECONSTRUCTION | FACILITIES ASSET MANAGEMENT
 CONSTRUCTION MANAGEMENT | FAST TRACK PROJECT DELIVERY
 BUILDING & UTILITY GENERAL CONTRACTING | DESIGN / BUILD

ORGANIZATION | CORPORATION, COMMONWEALTH OF MASSACHUSETTS

OFFICERS | EDWARD A. BOND, JR., CHIEF EXECUTIVE OFFICER
 ROBERT C. MURRAY, PRESIDENT
 FRANCIS X. HAYES, CHIEF OPERATING OFFICER
 ANTHONY BOND, PRESIDENT, C&U DIVISION
 RICHARD SMALL, CHIEF FINANCIAL OFFICER
 PAUL JAMES, SR. VICE PRESIDENT, RISK MANAGEMENT

ADMINISTRATIVE STAFF | 200
 SUPERINTENDENTS /
 FIELD PERSONNEL | 550+
 TOTAL EMPLOYEES | 750+

BONDING LIMIT
 SINGLE PROJECT | \$500,000,000
 TOTAL PROGRAM | \$1,000,000,000

*AGGREGATE UNCOMPLETED
 WORK PROGRAM

BONDING COMPANY | LIBERTY BOND
 SERVICES / AON RISK
 SOLUTIONS NORTHEAST
 617.457.7721

GENERAL LIABILITY
 INSURANCE COMPANY | GREENWICH
 INSURANCE COMPANY /
 AON RISK SOLUTIONS
 NORTHEAST, BROKER

WORKERS' COMP
 INSURANCE COMPANY | XL INSURANCE
 AMERICA INC /
 AON RISK SOLUTIONS
 NORTHEAST, BROKER

INISIGHT

CORPORATE FACTS



BOND

Vern Rich Vice President, Select Projects Group
617.387.3400 **office** | 617.839.3752 **cell** | vrich@bondbrothers.com

BONDBROTHERS.COM