

BOND

CIVIL & UTILITY

BOND



OUR MARKETS



CIVIL
INFRASTRUCTURE



ELECTRIC T&D



OIL & GAS



POWER GENERATION



DISTRICT ENERGY



HEALTHCARE
& LIFE SCIENCES



EDUCATION



Self-Performed
Construction

Feasibility &
Solutions Studies

Front End
Engineering Design
(FEED)

Technology Selection
& Procurement

Equipment
Evaluation &
Procurement

Budgeting &
Scheduling Support

VDC Services:
Building Information
Modeling (BIM) &
Laser Scanning

S
E
R
V
I
C
E
S

WHO WE ARE.

Servicing clients throughout the Northeast and Mid-Atlantic, BOND offers a depth of experience in self-performing civil & utility infrastructure expertise. Development of exceptional management plans, as well as expertly executed work in the field, allows us to provide our clients with solutions to complex challenges. We pride ourselves on a unique blend of advanced technologies and traditional craftsmanship.

With an expertise at building complex projects within the power, utility, industrial, environmental, academic, corporate and construction industries, BOND's Civil & Utility Team has led the successful delivery of many multi-million dollar projects from plant services to the engineering, procurement and construction (EPC) of new facilities, along with the delivery of many complex and prestigious ventures. This expertise combined with a concentration on project & program management, scope, budget development and preconstruction planning, alongside a sharp focus on safety, quality and cost, provides an impressive portfolio of infrastructure, energy and underground electrical transmission projects, campus utilities, underground distribution systems, electrical infrastructure and capital improvements.

Boston

Providence

New Haven

New York

Newark



OUR SKILLED AND EXPERIENCED

CIVIL & UTILITY TEAM



TONY BOND
President,
Civil & Utility



KANE CUDDY
Chief Operating Officer,
Civil & Utility



CHRIS DECKER
Vice President,
Northern New England



SCOTT CHURCHILL
Vice President,
Estimating & Business Development



DENNIS KEOUGH
Vice President,
Power & Energy



AL WATSON
Vice President,
Electric Transmission & Distribution



BRUCE BROWN
Vice President,
Southern New England



DAN FOPPIANO
Regional Manager,
New York City



STEVE SPINOSA
Project Executive



JIM BEATON
Senior Project Manager



GERRY McMORROW
General Superintendent

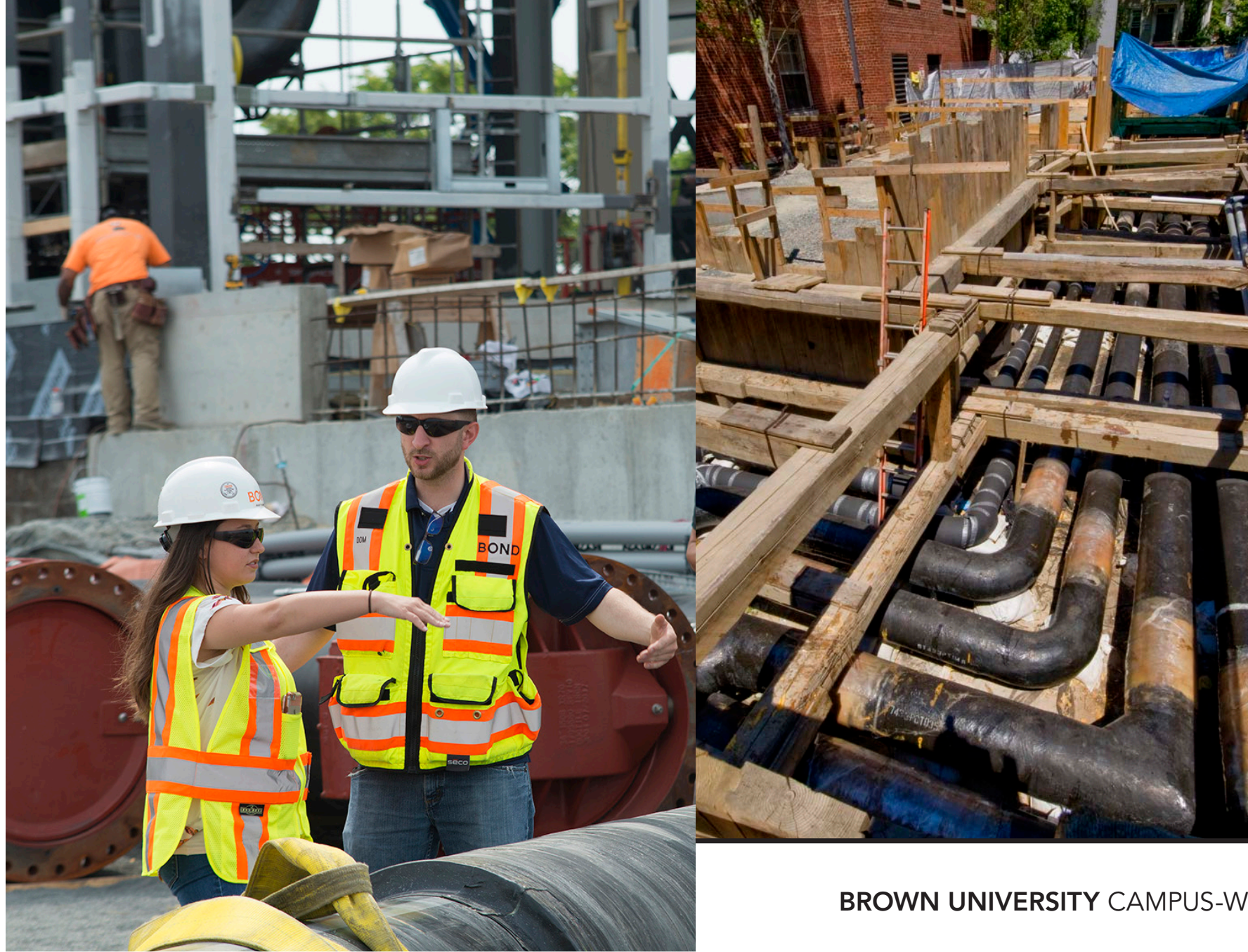


JUSTIN LAJEUNESSE
Business Development Manager

HARVARD UNIVERSITY
Allston District Energy Facility
and Energy Distribution
Systems

This current project at Harvard is the new distribution thermal utility corridor from the District Energy Facility (DEF) that is being constructed by BOND's Building Division. BOND'S Civil Infrastructure sector recently won this separate distribution contract and is working under the BOND Building Division DEF contract. The thermal distribution corridor for the new DEF building will consist of approximately 2000 LF of 24" hot water supply and return piping, 34" chilled water supply and return piping, 2000 LF of 12-way power duct bank and 8-way Western Avenue utility tunnel.

\$110M
CONTRACT VALUE



BOND was contracted to provide vault replacements and steam line expansions for The University of Connecticut Storrs Campus with an aggressive 3 month schedule. The vault replacement was an integral part of an energy savings initiative project (ESCO) for the University. BOND was approached by ConEdison Solutions to perform the work due to the challenging scope and schedule of the project.

\$50.8M
CONTRACT VALUE

BROWN UNIVERSITY CAMPUS-WIDE UTILITY INITIATIVE

2019

EXPECTED COMPLETION DATE

ENGINEER

RMP ENGINEERING

BOND'S SERVICES

LUMP SUM CONSTRUCTION

2010

COMPLETION DATE

ENGINEER

WM GROUP

BOND'S SERVICES

CONSTRUCTION

VEOLIA ENERGY BOSTON, INC.

Steam Manhole Construction

BOND provided self-performing crews supplemented with local subcontractors to meet the scheduled deadline. The scope of work included the installation of 100,000 LF of conduit through 5 communities (Norwalk, Westport, Fairfield, Bridgeport & Milford) and 4,800 LF of conduit in a residential community in Cheshire, CT, the installation of 116 pre-cast splice vaults, 3 river crossings and one 54" pipe-jacking under the Metro North Railroad. Primary challenges included dewatering, traffic control and significant ledge removal. A majority of the work occurred at night on well-traveled areas of Route 1.

\$2.4M

CONTRACT VALUE



BOND completed utility enabling work at the new site of the MIT. nano Research Building. The 2,000 researchers housed in this new facility utilize nanotechnology to create many materials and devices with a wide range of applications in medicine, electronics, biomaterials, energy production and consumer products.

\$11.9M

CONTRACT VALUE

MASSACHUSETTS INSTITUTE OF TECHNOLOGY
MIT.NANO RESEARCH BUILDING, UTILITY ENABLING & CIVIL INFRASTRUCTURE

2006

COMPLETION DATE

ENGINEER

VEOLIA ENERGY

BOND'S SERVICES

LUMP SUM CONSTRUCTION

2015

COMPLETION DATE

ENGINEER

KLEINFELDER

BOND'S SERVICES

LUMP SUM CONSTRUCTION

EVERSOURCE

STA 211 Woburn Substation Civil Construction

BOND was hired to provide civil and below grade electrical construction services to support the installation of a new 345 kV gas-insulated bus, a 345 – 115 kV autotransformer and the associated Trenwa trench at Eversource STA 211 in Woburn, MA.

BOND's preconstruction effort included a review of methods to optimize the construction schedule. One of the major engineered solutions included the installation of the pre-cast sound wall versus the proposed cast-in-place wall, which resulted in significant cost savings and shortened the schedule.

\$2.0M
CONTRACT VALUE



BOND self-performed perimeter security upgrades to an existing substation for a major local utility company. BOND's work included the installation of 277 hybrid pre-cast foundations, 3,200 LF of panelized ballistic fencing consisting of 10'/15'/20' high fence sections, 2 structural vehicle gates, 3 structural pedestrian gates, electrical infrastructure for security camera installation, trenching excavation and backfill for associated grounding and conduits and perimeter barb wire installation. The fence line installation work revolved heavily around various high voltage overhead line outage across the substation site. The fast track schedule through the winter provided a challenge, as well as the confidentiality and security around the construction site.

\$8.4M
CONTRACT VALUE

CONFIDENTIAL CLIENT SUBSTATION PHYSICAL SECURITY CONSTRUCTION

ELECTRIC TRANSMISSION & DISTRIBUTION

2017
COMPLETION DATE

ENGINEER
EVERSOURCE

WOBURN
LOCATION

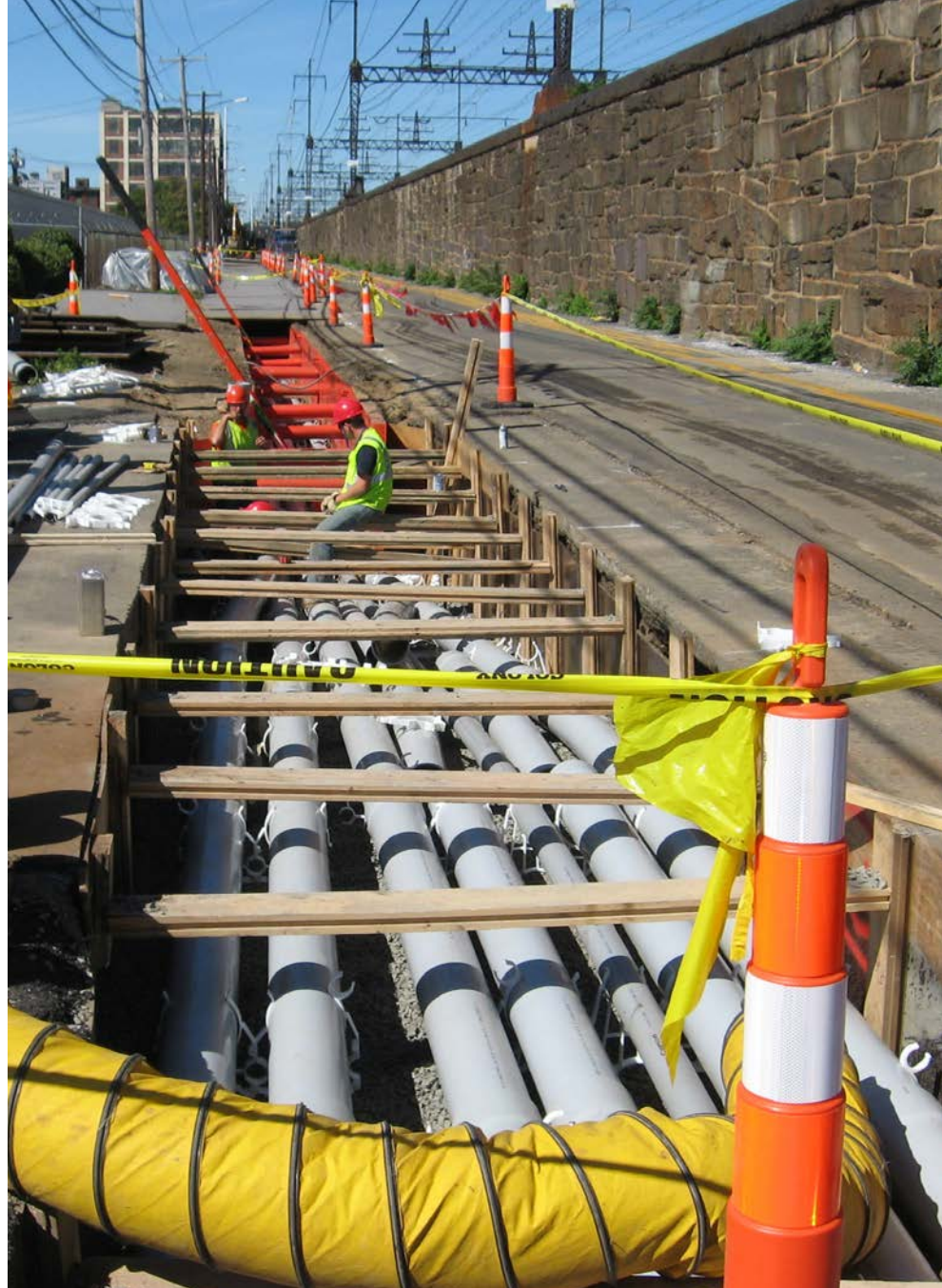
2018 | COMPLETION DATE

NEW ENGLAND | LOCATION

EVERSOURCE ENERGY Middletown - Norwalk Transmission Line

BOND provided self-performing crews supplemented with local subcontractors to meet the scheduled deadline. The scope of work included the installation of 100,000 LF of conduit through 5 communities (Norwalk, Westport, Fairfield, Bridgeport & Milford) and 4,800 LF of conduit in a residential community in Cheshire, CT, the installation of 116 pre-cast splice vaults, 3 river crossings and one 54" pipe-jacking under the Metro North Railroad. Primary challenges included dewatering, traffic control and significant ledge removal. A majority of the work occurred at night on well-traveled areas of Route 1.

\$194M
CONTRACT VALUE



BOND completed this challenging underground transmission project for Prysmian Power Cable & Systems and National Grid. Existing spare ducts were utilized for the first mile of the project with the remaining 2 miles requiring a new 6-way concrete encased duct bank and splicing vaults. In addition to executing the trenching operation safely along a densely populated business and residential area, there was an extensive amount of ledge removal to attain proper depth. Other major work included a 42" pipe-jacking under the active CSX / MBTA railroad spur line, as well as sidewalk and pavement restoration.

\$7.4M
CONTRACT VALUE

NATIONAL GRID WORCESTER 115KV CABLE PROJECT

2009

COMPLETION DATE

ENGINEER

BURNS & MCDONNELL

**MIDDLETOWN -
NORWALK, CT**

LOCATION

2011

COMPLETION DATE

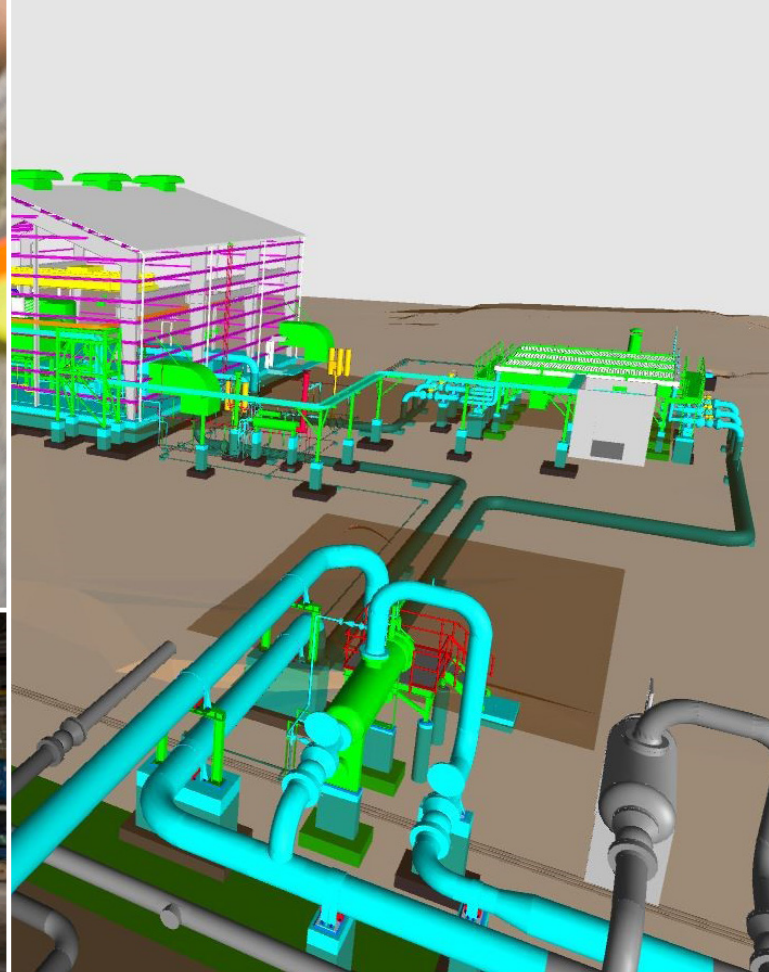
ENGINEER

POWER ENGINEERS

WORCESTER, MA

LOCATION

ELECTRIC TRANSMISSION & DISTRIBUTION



REALITY CAPTURE | VIRTUAL DESIGN & CONSTRUCTION

INTEGRATED SERVICES

START WITH THE END IN MIND.

BOND's Integrated Services model is a collaborative approach that combines the latest technology innovations with the brightest teams to manage a project's entire life-cycle.

Site Evaluation

Improved Planning

Enhanced Quality Control

Coordination and Constructability Reviews

Virtual Reviews

Model Code-Required Clearances

Maintenance of Access Zones around Equipment

Clash Detection within Existing Conditions Model

Effectively Track Punch List / Commissioning Items

CONEDISON Bronx Distribution

Upgrading the vaporizer required major modifications to the heater building to facilitate the installation of a larger heater, new vaporizer, louvers, stack, and vaporizer tower. BOND was hired by EPC firm, CBI Services to perform the following: a structural engineering analysis, building modifications, equipment rigging, existing system removal, concrete foundation and pedestal construction, as well as furnish and installation of the new vaporizer tower with associated work. Also included was the electrical scope and installation of an In-Tank LNG Pump, which required a shutdown of the tank, removal of the pressurized lid and lowering of the pump into the LNG.

\$10M

CONTRACT VALUE



BOND worked directly with Enbridge (Spectra Energy) to complete all meter and regulator station work as part of the AIM project. BOND worked closely with all facets of Enbridge's team, including Project Management, Right-of-Way Agents and Materials Management group, to ensure an on-time project that minimized disruption to Enbridge's existing system as well as their customer's systems. BOND successfully completed work at 22 new and existing stations over a two-year period utilizing a centralized prefabrication shop that not only enhanced safety, quality and schedule but also allowed for the most efficient deployment of labor and equipment.

\$42M

CONTRACT VALUE

ENBRIDGE AIM METER STATION PROGRAM

2018
COMPLETION DATE

OWNER
CONSOLIDATED EDISON

BOND'S SERVICES
UNIT PRICE

2016
COMPLETION DATE

ENGINEER
MOTT MACDONALD
NORTHSTAR MUSTANG GROUP

BOND'S SERVICES
LUMP SUM CONSTRUCTION

YANKEE GAS

LNG Vaporization Expansion

Upgrading the vaporizer required major modifications to the heater building to facilitate the installation of a larger heater, new vaporizer, louvers, stack, and vaporizer tower. BOND was hired by EPC firm, CBI Services to perform the following: a structural engineering analysis, building modifications, equipment rigging, existing system removal, concrete foundation and pedestal construction, as well as furnish and installation of the new vaporizer tower with associated work. Also included was the electrical scope and installation of an In-Tank LNG Pump, which required a shutdown of the tank, removal of the pressurized lid and lowering of the pump into the LNG.

\$6.0M

CONTRACT VALUE



SPECTRA ENERGY BURRILLVILLE COMPRESSOR STATION

BOND was selected to work on the station upgrade as part of a pipeline expansion project to bring more natural gas to New England and ease the region's energy crisis. The project scope centered around the addition of a new Solar Turbine Mars 100 unit at an existing facility.

\$16M

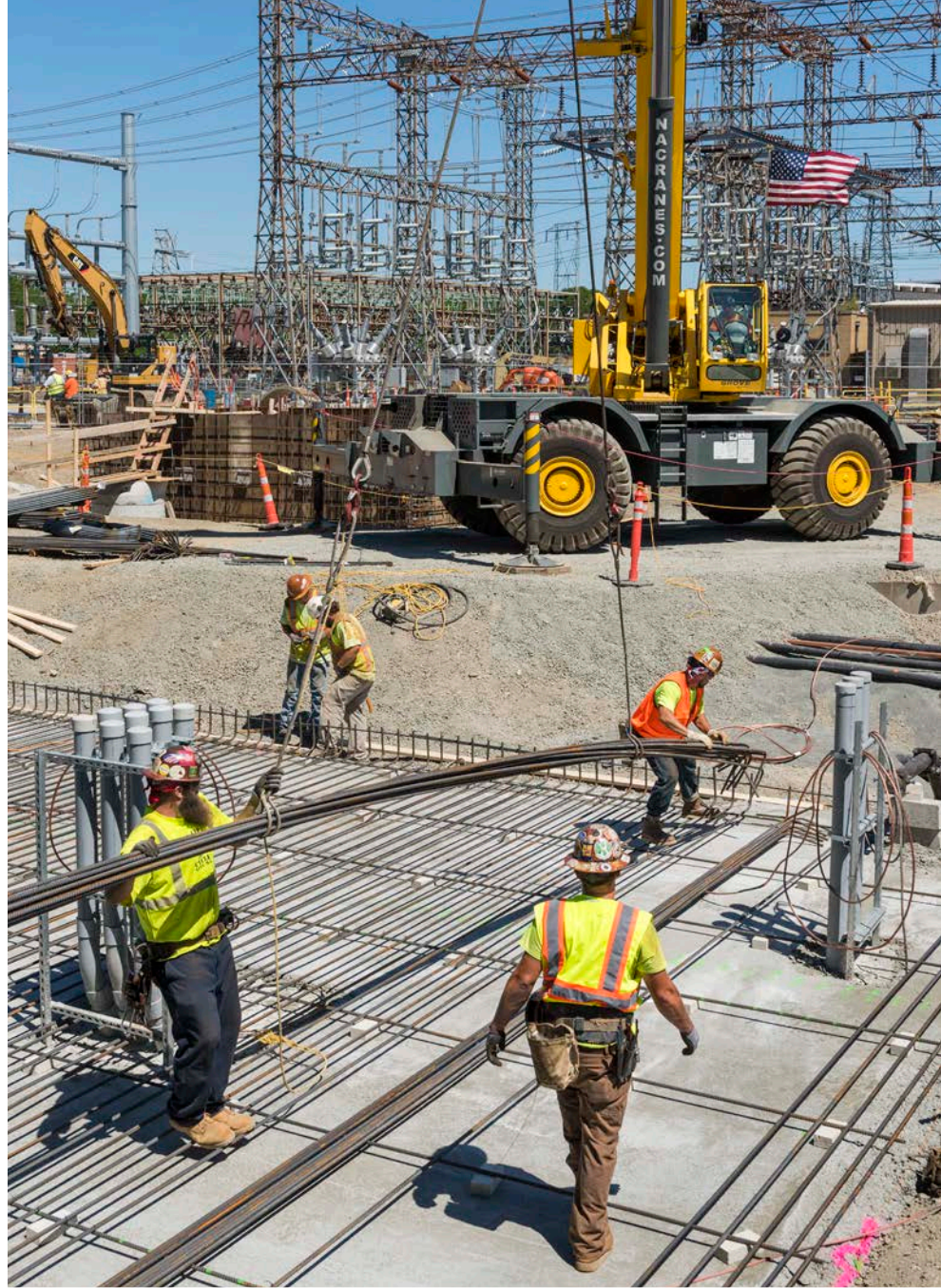
CONTRACT VALUE

FOOTPRINT POWER

Salem Harbor Energy Station

Iberdrola Energy Projects selected BOND as the civil site contractor for the new Salem Harbor Energy Center. The state-of-the-art 675 MW natural gas plant replaced a 60 year old coal & oil fired facility, requiring less than one third of the old plant's land, leaving the remainder for new waterfront development. To build the foundations, BOND installed 2,470 pre cast concrete piles and 30,600 CY of reinforced concrete. To support the operations and mechanical workings of the plant, BOND installed utility trenches for 50,000 LF of piping and ductbank and installed several water detention systems totaling 260,000 gallons.

\$106M
CONTRACT VALUE



Iberdrola Renewables selected BOND as a partner during the construction of one of the largest wind energy facilities in Southern New England. Located in the Berkshires, this \$20 million project marks another milestone in Massachusetts' Renewable Energy Initiative, which plans for Wind Energy to account for 10% of the state's electricity load by 2020. Our team constructed 19 concrete foundations for 340' tall 1.5 MW GE-model turbines, excavated and installed 17,000 LF of underground and overhead DC/AC collection systems, installed a new 69 kV/34.5 kV substation and built an Operations & Maintenance Building that houses the facility's controls.

\$20M
CONTRACT VALUE

POWER GENERATION

HOOSAC WIND PROJECT IBERDROLA RENEWABLES

2018

COMPLETION DATE

ENGINEER

WORLEY PARSONS/IDOM

BOND'S SERVICES

UNIT PRICE/LUMP SUM CONSTRUCTION

2011

COMPLETION DATE

ENGINEER

WESTWOOD
PROFESSIONAL SERVICES

BOND'S SERVICES

LUMP SUM CONSTRUCTION

NRG ENERGY

Kendall Station Repowering

Kendall Station is a 256 megawatt combined cycle power plant located in the densely populated, biotechnology area of Kendall Square in Cambridge, MA. Although its roots date back to the 1940s, the building has been upgraded as an efficient combined heat and power plant that's tapping district heating to improve efficiency by more than 90%. This project was completed within a fast-track, 16 month schedule. Since completion, the plant has quadrupled electricity output and reduced air emissions by 41%.

\$9.7M
CONTRACT VALUE



BOND was responsible for a complete site civil package, foundations, underground mechanical, underground electrical, grounding, paving and site restoration. BOND provided the client a high quality and timely product of the 'anchor bolts down' package, to support the project's schedule and above ground scopes of work. The two unique challenges of this project were the compact site arrangement and aggressive project schedule. The project team analyzed the site arrangement plan and developed a detailed project schedule of all foundation, electrical and piping systems to manage the installation sequence of each component to meet the contractual milestone dates.

\$23M
CONTRACT VALUE

GEMMA POWER SYSTEMS WEST MEDWAY II FACILITY PROJECT

256MW

COMBINED CYCLE POWER PLANT

ENGINEER

BIBB & ASSOCIATES

BOND'S SERVICES

LUMP SUM SELF-PERFORM

2018

COMPLETION DATE

ENGINEER

MOTT MACDONALD

BOND'S SERVICES

LUMP SUM CONSTRUCTION

POWER GENERATION



BOND considers protecting every person within or near the construction site its foremost priority. No priority overrules safety at any time. We integrate safety into our construction planning and activities. This is represented by **OUR 2018 EMR RATING OF .71**

SAFETY FORWARD
BEST PRACTICES.

ESTABLISHED	1907
WEB ADDRESS	WWW.BONDBROTHERS.COM
MAIN ADDRESS	10 CABOT ROAD, SUITE 300 MEDFORD, MA 02155 617.384.3400
CONNECTICUT OFFICE	370 JAMES STREET, SUITE 405 NEW HAVEN, CT 06513 860.349.8880
NEW JERSEY OFFICE	ONE GATEWAY CENTER, SUITE 2600 NEWARK, NJ 07102 973.799.8572
NEW YORK OFFICE	34 MARCONI STREET BRONX, NY 10461 617.387.3400
RHODE ISLAND OFFICE	ONE CEDAR STREET, SUITE 100 PROVIDENCE, RI 02903 401.383.7007
SERVICES	PRECONSTRUCTION FACILITIES ASSET MANAGEMENT CONSTRUCTION MANAGEMENT FAST TRACK PROJECT DELIVERY BUILDING & UTILITY GENERAL CONTRACTING DESIGN / BUILD
ORGANIZATION	CORPORATION, COMMONWEALTH OF MASSACHUSETTS
OFFICERS	EDWARD A. BOND, JR., CHIEF EXECUTIVE OFFICER ROBERT C. MURRAY, PRESIDENT FRANCIS X. HAYES, CHIEF OPERATING OFFICER ANTHONY BOND, PRESIDENT, C&U DIVISION RICHARD SMALL, CHIEF FINANCIAL OFFICER PAUL JAMES, SR. VICE PRESIDENT, RISK MANAGEMENT

ADMINISTRATIVE STAFF	200
SUPERINTENDENTS / FIELD PERSONNEL	550+
TOTAL EMPLOYEES	750+
BONDING LIMIT	
SINGLE PROJECT	\$500,000,000
TOTAL PROGRAM	\$1,000,000,000
	<small>*AGGREGATE UNCOMPLETED WORK PROGRAM</small>
BONDING COMPANY	LIBERTY BOND SERVICES / AON RISK SOLUTIONS NORTHEAST 617.457.7721
GENERAL LIABILITY INSURANCE COMPANY	GREENWICH INSURANCE COMPANY / AON RISK SOLUTIONS NORTHEAST, BROKER
WORKERS' COMP INSURANCE COMPANY	XL INSURANCE AMERICA INC / AON RISK SOLUTIONS NORTHEAST, BROKER

INISIGHT

CORPORATE FACTS



BOND

Tony Bond President, Civil & Utility
617.394.6286 office | 617.212.7731 cell | abond@bondbrothers.com

Scott Churchill Vice President, Estimating & Business Development, Civil & Utility
617.394.6306 office | 617.212.0137 cell | schurchill@bondbrothers.com